

The 2019 Invitational Mills Trophy Race

June 7-9, 2019

Organized under the Authority of the Toledo Yacht Club, Storm Trysail Club
and the Mills Trophy Race Committee
Toledo, Ohio, USA

SAILING INSTRUCTIONS

Note: The Start Sequence will be the standard 5 minute sequence per RRS 26.

1 RULES

- 1.1.1 The regatta will be governed by the rules as defined in *The Racing Rules of Sailing 2017-2020, Notice of Race, Class Rules on file with Race Committee and these Sailing Instructions.*
- 1.1.2 The US SAILING Prescriptions to rules 60.3, 63.2 and 63.4 shall not apply.
- 1.2.1 Each individual competitor may, with the agreement of the Mills Race Committee, display advertising on clothing and personal equipment without restriction.
- 1.2.2 Advertising chosen and provided by the Mills Race Committee may be displayed on hulls, spars and sails without restriction except on the spaces reserved for identification by Appendix J of the Racing Rules and under Regulations 20.5 & 20.9.
- 1.3 Each yacht must conform to the current US Sailing's US Safety Equipment Requirements (USSER, effective 1/1/2019 as amended by the Mills Trophy Race Committee) governing minimum equipment and accommodations for US Coastal events which will apply.

- 1.4 Note: All boats must have a completed a Crew Overboard Drill Certificate signed by all participating crew members. This document must be kept onboard and be available at all times. The certificate may be downloaded from the "Documents/Forms" section at [2019 Mills Trophy Race Documents](#).**

Annually, two-thirds of the boat's racing crew shall practice man-overboard procedures appropriate to the boats size and speed. See Mills Safety Equipment Requirement #4.2. Per Mills Safety Equipment Requirement #4.3.2, No fewer than two members of the crew, unless racing single handed, shall have attended a US Sailing Safety at Sea Seminar or on-line course within the last 5 years. It is recommended that at least 30% of those aboard the boat attend the course. US Sailing On-Line SAS seminar and Test satisfies this requirement

- 1.5 Racing yachts shall carry corresponding numbers on mainsails, spinnakers, storm trysails and all overlapping headsails whose LP measurement exceed 130%.

2 NOTICES TO COMPETITORS

Notices to competitors will be posted on the official notice board located at the Toledo Yacht Club and also online at [2019 Mills Trophy Race Documents](#)

3 CHANGES TO SAILING INSTRUCTIONS

Any change to the sailing instructions will be posted before 1200 on Friday, June 7, 2019.

4 SIGNALS MADE ASHORE

4.1 Signals made ashore will be displayed at the Toledo Yacht Club flagpole.

4.2 When flag AP is displayed ashore, '1 minute' is replaced with 'not less than 2 Hours' in the race signal AP. This changes RRS Race Signals. In the event of prolonged severe weather, the Race Committee may postpone the race start until the following morning. If such should occur, the Race Committee reserves the right to change the course for all entrants to the Alternate Course (see Sec 9.4). The Alternate Course and new start sequence schedule will be posted at Toledo Yacht Club and on-line at [Yacht Scoring](#) within one hour of the Race Committee's return to the dock at the Toledo Yacht Club.

In the event of complete cancellation of the race, festivities will continue as planned at Put-in-Bay.

5 SCHEDULE OF RACES

5.1 Date of racing: Friday June 8, 2018

Harbor Gun:	1430
-------------	------

Attention Signal	Several Short Blasts	1654
------------------	----------------------	------

Signal	Flag and Sound	5 Minutes Before Starting Signal
--------	----------------	-------------------------------------

Warning Flag	Class Flag 1 (Start 1) & Sound	5
--------------	--------------------------------	---

Preparatory	Preparatory Flag 1 & Sound	4
-------------	----------------------------	---

One-minute	Drop Preparatory Flag+ 1 Long Sound	1
------------	--	---

Starting	Drop Class Flag 1 & Sound	0
----------	---------------------------	---

The warning signal for each succeeding class shall be made with or after the starting signal of the preceding class.

5.2 The scheduled time of the warning signal for the first race: 1655.

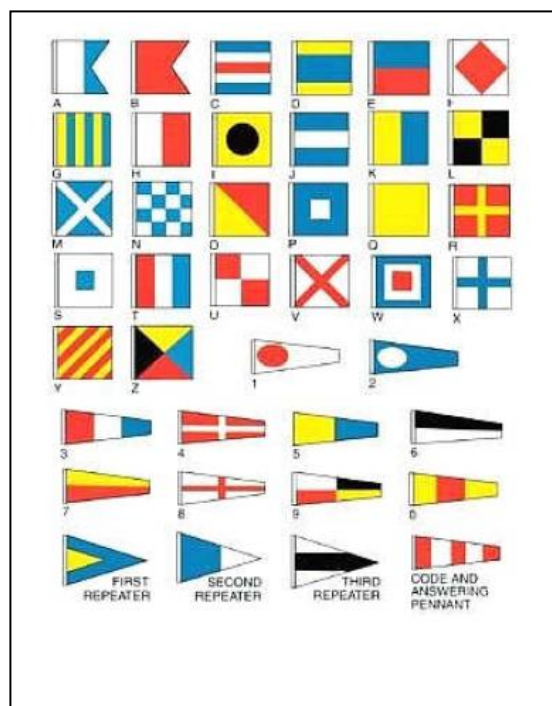
5.3 After a long postponement, to alert boats that a race or sequence of races will begin soon, an orange flag will be displayed (with one sound) for at least four minutes before a preliminary signal is displayed.

6 CLASS FLAGS and STARTS

6.1 Class Starts will be indicated by Code Flag:

Code Flags

<u>Start #/ Class</u>	<u>Flag</u>
1) PHRF C&D	#1
2) PHRF B	#2
3) PHRF A	#3
4) MULTI-HULL	#4
5) PHRF G & H	#5
6) PHRF E & F	#6
7) DOUBLE HANDED	#7
8) PHRF I & J	#8
9) CRUISING/CLASSICS	#9
10) JIB&MAIN E	#0
11) JIB&MAIN D	D
12) JIB&MAIN C	E
13) JIB&MAIN B	F
14) JIB&MAIN A	R
15) Optional Start	K



6.2 Preliminary Starting Times

Mills Trophy Course(67.8 nm)

Start No.	Class	Class Flag
1	PHRF C & D	#1
2	PHRF B	#2
3	PHRF A	#3
4	MULTI-HULL	#4

Warning Signal

1655
1700
1705
1710

Governor's Cup Course (52.6 nm)

Start No.	Class	Class Flag
5	PHRF G & H	#5
6	PHRF E & F	#6

Warning Signal

1715
1720

President's Trophy Course (37.6 nm)

Start No.	Class	Class Flag
7	DOUBLE-HANDED	#7
8	PHRF I & J	#8
9	CRUISING CLASS	R
10	JIB & MAIN E	#0
11	JIB & MAIN D	D
12	JIB & MAIN C	E
13	JIB & MAIN B	F
14	JIB & MAIN A	G
15	Optional CLASS	K

Warning Signal

1725
1730
1735
1740
1745
1750
1755
1800
1805

Scratch sheets will be posted on the official Bulletin Board at TYC and on-line at [Yacht Scoring](#) no later than 1800 Thursday June 6, 2019

7 RACING AREAS

- 7.1 Page 30 of the Race Program shows the location of racing areas.
- 7.2 Required (Non-electronic) Charts are Numbers 14830, 14844

8 THE COURSES

- 8.1 The diagrams on page 30 of the Race Program show the courses, including the approximate angles between legs, the order in which marks are to be passed, and the side on which each mark is to be left.

The approximate course lengths will be:

Mills Trophy Course: 67.8 nm for Multi-hulls, PHRF (162 and below) and higher rated boats racing for the Mills Trophy.

President's Trophy Course: 37.6 nm for all JAM classes, Double-handed, PHRF (165 and above), Cruising and Classics with 6 or more entries.

Governor's Cup course: 52.6 nm optional course for PHRF (162 and below).

- 8.2 Courses will not be shortened. This changes rule 32.
- 8.3 Legs of the course will not be changed after the preparatory signal. This changes rule 33.

9 MARKS

9.1 Mills Trophy Course

From the Starting Line proceed in a northeasterly direction to the RACON Buoy FI G 5s "1E" at the base of the East Outer Channel, rounding it to starboard. Proceed in a southerly direction, rounding West Sister Island to port, then keeping the Niagara Reef Buoy G "5" Fl G 4s to starboard and Scott Point Shoal Light G "1" Fl G 4s to starboard, round the Sandusky Harbor (Mosley) Channel Buoy R "2" Fl R 4s to port. Proceed north to Kelleys Island Shoal Buoy G "1" Fl G 4s, leaving it to port. From there to Gull Island Shoal Buoy R "4" Fl R 4s leaving it to starboard, then northwest to the BELL Buoy G "1" Fl G 4s, east of Middle Bass Island, rounding it to port and to the Finish Line, keeping Ballast Island to port.

Total Course Length: 67.8 nm.

9.2 President's Trophy Course

From the Starting Line proceed in a northeasterly direction to the outer Toledo Channel Buoy G "1" QG rounding it to starboard. Proceed in a southeasterly direction keeping the Niagara Reef Buoy G "5" Fl G 4S to Starboard. Round Catawba Island Buoy G "1" Fl G 4s to port, leave Mouse Island to Starboard, proceed northeasterly and leave Scott Point Shoal Light G "1" Fl G 4s to Port, then to Ballast Island rounding it to port, to the Finish Line.

Total Course Length: 37.6 nm.

9.3 **Governor's Cup Course:**

From the Starting Line proceed in a northeasterly direction to the outer Toledo Channel Buoy G "1" QG rounding it to starboard. Proceed in a southeasterly direction keeping the Niagara Reef Buoy G "5" Fl G 4s to starboard. Round Catawba Island Buoy G "1" Fl G 4s to port, leave Mouse Island to starboard and round the Sandusky Harbor (Moseley) Channel Buoy R "2" Fl R 4s to port. Proceed in a north-northwesterly direction to Kelley's Island keeping the R "2" Fl R 4s Buoy to starboard then to Ballast Island rounding it to port, to the Finish Line.
Total Course Length 52.6 nm

9.4 **Alternate Course to Put-in-Bay**

In the event of a postponement that results in the race starts being rescheduled to Saturday morning, the Alternate Course will be used to get the race entrants to Put-in-Bay. From the Starting Line proceed directly to the Finish Line, crossing from west to east, with your reflective numbers positioned aft of the mast on the starboard (shoreside) lifelines. Total Course Length 22.6 nm

- 9.5 The Starting Line shall be identified on the Race Committee boat by a Yellow Flag with the black letters "RC" on the starboard end of the line and an orange tetrahedron near an Observers Yacht at the port end of the line. If no tetrahedron or Observers Yacht is on station, the port end of the line will be the Toledo Harbor Light.

10 THE START

- 10.1 Races will be started as indicated in Sailing Instruction #5 using rule 26 with the warning signal with class flag made 5 minutes before the starting signal.
- 10.2 The Starting Area will be approximately 1.7n nm SE (140 T degrees) of the Toledo Harbor Light (Approx. 41.44.3 N 83.18.1 W) The line itself shall be between an Orange Flag on the Race Committee Yacht (identified by a Yellow Flag with the black letters "RC") and Orange Mark at the opposite end of the line. One or more Limit Marks (flag buoy with half red and half green horizontal bands) may be set near a starting line. If a yacht touches any limit mark, the starting line boat, or passes between a limit mark and a starting line boat, she shall have touched a starting mark.
The Starting Line Diagram is found as an inset on page 30 of the Race Program.
- 10.3 Boats whose warning signal has not been made shall avoid the starting area during the starting sequence for other classes. All yachts sailing in this regatta may be subject to protest by the Race Committee for failing to stay clear of the indicated areas. See "inset diagram" on Race Program page 30.
- 10.4 A boat starting later than 30 minutes after her starting signal will be scored Did Not Start without a hearing. This changes rules A4 and A5.

11 THE FINISH

- 11.1 The Finishing Marks will be an orange shape with a white strobe light on the water end approximately 600 ft. from the protection mark and the Lighted Flag Pole flying a Yellow pennant with Black "RC" letters and an Orange Flag located on South Bass Island. An orange shape with a strobe light will be placed as a protection marker indicating shallow water near the shore. The Finish Line Diagram is found on page 31 of the Race Program.

Due to the location of the finish line, yachts will not receive a gun or sound signal. If the Finish Line is to be unattended, the Race Committee will broadcast advance notification on VHF channel 71. In that case, it is the responsibility of the skipper to record and inform the Race Committee of its finishing time.

- 11.2 After Finishing, each yacht shall contact the Race Committee on VHF channel 71 and give:

1. Yacht Name
2. Yacht ID #
3. Yacht ahead (if known)
4. Yacht astern (if known)

Yachts are requested to monitor VHF channel 71 until instructed to change to VHF Channel 78 for dockage or inspection instructions. **Do not break in on transmissions at the finish line.**

All boats must wait for the Mills Race Harbor Master's docking instructions before entering the Put-in-Bay Harbor.

11.3 **Day Finish:**

Leave mainsail up well beyond the finishing line so that sail numbers and yacht's class may be verified after each finish.

11.4 **Night Finish:**

Note: Reflective Boat ID#'s are required to be tightly displayed aft of the beam on the portside/shoreside lifelines prior to entering the finish area (day or night). If the numbers cannot be read, the Committee may not be able to establish a finish time for the competitor. Please leave mainsail and boat ID# showing well past the finish line. Keep reflective number for next year.

11.5 **General Finishing Requirements:**

- 11.5.1 Each yacht shall take its own time at the finishing line and record yacht time and day on the card provided. Also, each yacht shall indicate the sail number or name of other yachts ahead, astern and abeam on the same card.
- 11.5.2 It is required that the finish card with sail number and finish time be turned in at the Finish Card box at the island end of dock by 0900 Saturday or within 1-1/2 hours after finishing, whichever is later. Failure to turn in finish card may subject yacht to disqualification.

12 PENALTY SYSTEM

- 12.1 The Scoring Penalty, rule 44.3, will apply. The penalty will be no less than 3 places at the discretion of the protest committee, in lieu of disqualification, but in no case should the end result be better than the fouled boat.
- 12.2 For the Multi Hulls class (only), rule 44.1 is changed so that the Two-Turns Penalty is replaced by a One-Turn Penalty.

13 TIME LIMITS AND RECORDING MARKS

- 13.1 There is no time limit.
- 13.2 Recording Marks of the Course:
Each yacht shall record the yacht ahead and behind when rounding or crossing:

Mills Trophy Course: Sandusky Harbor (Moseley) Channel Buoy R"2" Fl R4s and at the Finish Line.

President's Trophy Course: Catawba Island Buoy G"1" Fl G4s and at the Finish Line.

Governor's Cup Course: Catawba Island Buoy G"1" Fl G4s and at the Finish Line.

14 PROTESTS AND REQUESTS FOR REDRESS

- 14.1 Protest forms are available at [US Sailing Protest Forms](#) and at the race office, located at the Put-in-Bay Yacht Club pavilion. Protests and requests for redress or reopening shall be delivered there within the appropriate time limit. The protesting yacht shall define the dockage location of all yachts named in the protest. The Race Committee suggests that the protesting yacht request a receipt signed by the party accepting the protest form.
- 14.2 For each class, the protest time limit is 2 hours after finishing.
- 14.3 Notices will be posted no later than 30 minutes after the protest time limit to inform competitors of hearings in which they are parties or named as witnesses. Time and location of the hearing will be posted on the official Mills Race Bulletin Board at Put-in-Bay Yacht Club.
- 14.4 Notices of protests by the race committee or protest committee will be posted to inform boats under rule 61.1(b).
- 14.5 Breaches of instructions 10.3, 16, 17, 18, 19, and 20 will not be grounds for a protest by a boat. This changes rule 60.1(a). Penalties for these breaches may be less than disqualification if the protest committee so decides. The scoring abbreviation for a discretionary penalty imposed under this instruction will be DPI.
- 14.6 A request for redress based on a protest committee decision shall be delivered no later than 30 minutes after the decision was posted. This changes rule 62.2.

15 SCORING

- 15.1 The Low Point System of Appendix A will apply.
- 15.2 PHRF and JAM yachts scoring will be calculated in accordance with the yacht's PHRF rating certificate as approved by the Race Committee. Multi-Hull yachts will sail using the GLMRA rule. PHRF/ORR registered yachts will be assigned to race in the appropriate PHRF Class on the Mills Trophy Course, and in addition will be separately scored based on their valid ORR certificate. If six or more boats register as ORR, ORR flags will be awarded.
- 15.3 The Mills Trophy Race will be scored Time on Distance. Time Allowances for yachts will be calculated in accordance with a yacht's rating and the rated distance.

16 SAFETY REGULATIONS

- 16.1 Charts required are No 14830 and 14844
- 16.2 A boat that retires from a race shall notify the race committee as soon as possible by contacting them on VHF 71 or telephoning them at Put-in-Bay at (248)-224-7376. A yacht abandoning the race for any reason must break out her ensign and keep clear of yachts still racing.
- 16.3 Through a safety meeting with the crew, the skipper must assure himself that the crew knows where the safety equipment is kept and how to use it. In addition, the skipper and crew should discuss how to handle various emergency situations including man overboard, grounding, and loss of steering, flooding, fire, and dismasting and abandon ship. The safety of a yacht and her crew is the sole and inescapable responsibility of the owner or skipper who must insure that the yacht is fully sound, thoroughly seaworthy and manned by an experienced crew who are physically fit. The skipper of the yacht must be satisfied as to the soundness of the hull, spars, rigging, sails and all gear. He must insure that all equipment is properly maintained and stowed.

17 REPLACEMENT OF CREW OR EQUIPMENT

Substitution of damaged or lost equipment will not be allowed unless authorized by the race committee. Requests for substitution shall be made to the committee at the first reasonable opportunity.

18 EQUIPMENT AND MEASUREMENT CHECKS

- 18.1 A boat or equipment may be inspected at any time for compliance with the class rules and sailing instructions. Inspection is optional and at the discretion of the Race Committee. On the water, a boat can be instructed by a race committee equipment inspector or measurer to proceed immediately to a designated area for inspection.
- 18.2 Inspection of a yacht in no way limits or reduces the complete and unlimited responsibility of a yacht's skipper for the safety of a yacht or her crew. The Race Committee reserves the right to inspect entries for eligibility and equipment requirements at any time prior to the Awards. Yachts which fail to comply with these equipment and accommodation standards may be protested by the Committee. If such a protest is sustained, the yacht may be disqualified or assessed an appropriate time penalty.

19 TRASH DISPOSAL

Boats shall not put any trash in the water.

20 DIVING EQUIPMENT AND PLASTIC POOLS

Underwater breathing apparatus and plastic pools or their equivalent shall not be used around keelboats between the preparatory signal of the first race and the end of the regatta.

21 RADIO COMMUNICATION

All competitors shall monitor VHF channel 71.

22 PRIZES

An Awards Ceremony will be held at the Put-in-Bay Yacht Club starting at 0930 Sunday June 9, 2019.

Prizes will be given as follows: Flags shall be awarded to the top three finishers in each class with six (6) or more entries, plus Overall Best Corrected and Elapsed Times for Mills PHRF, Governors PHRF, Presidents PHRF, Presidents JAM.

Trophies shall be awarded to the best finisher in each class and division. In addition, Perpetual Trophies may include (but are not limited to) the Associated Yacht Club Trophy, Cleveland Press Cup, Commodore Clement O. Miniger Trophy, Monroe Yacht Club Cup, Toledo Yacht Club Time Prize Trophy (ORR), Commodore Frank Heck Trophy, Budweiser Eagle Trophy, Commodore Affleck Bowl, Commodore Johnston/Wood Trophy, Commodore Harry L. Wood Trophy, C&C Perpetual Trophy, W.C. Noack and Sons Trophy and the Old Sam Trophy.

Race trophies for each class winner and all other overall, area and special perpetual trophies will be awarded at a special trophy presentation to be held at the Toledo Yacht Club. The date will be the Wednesday preceding the next year's race.

23 DISCLAIMER OF LIABILITY

Competitors participate in the regatta entirely at their own risk. See rule 4, "Decision to Race". The organizing authority will not accept any liability for material damage or personal injury or death sustained in conjunction with or prior to, during, or after the regatta.

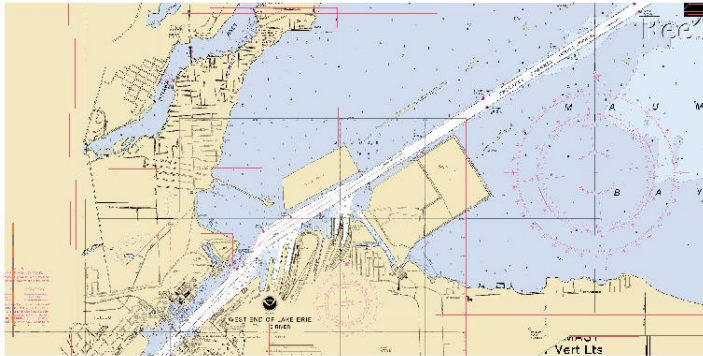
The Toledo Yacht Club, the Mills Trophy Race Committee, and cosponsoring clubs do not accept responsibility for loss of life or injury to participants or others or for the loss or damage to any vessel in any way or from any cause during or related to this race, cruise or related activities.

The skipper and/or owner of each yacht is responsible for the conduct of each member of the crew and is further responsible to making sure that only those of his crew who are of the legal drinking age receive the specified writs bands.

24 INSURANCE

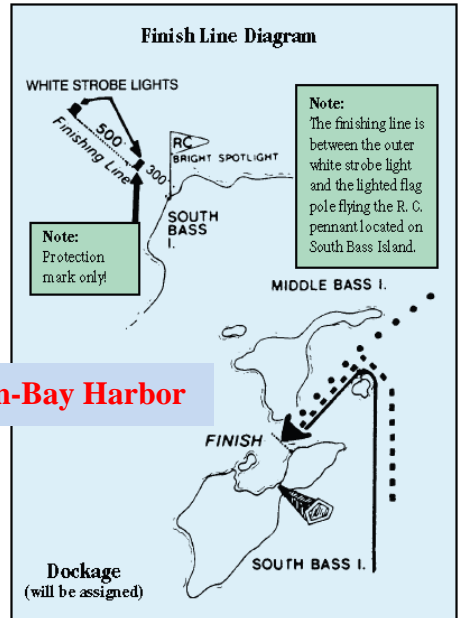
Each participating boat shall be insured with valid, third-party insurance sufficient to cover liability for loss, damage, personal injury, or death (suggested minimum \$300,000) but not less than \$100,000 for each incidence and occurrence.

Attachments A,B,C



Toledo Yacht Club Harbor

Mills Race Courses



Put-in-Bay Harbor

